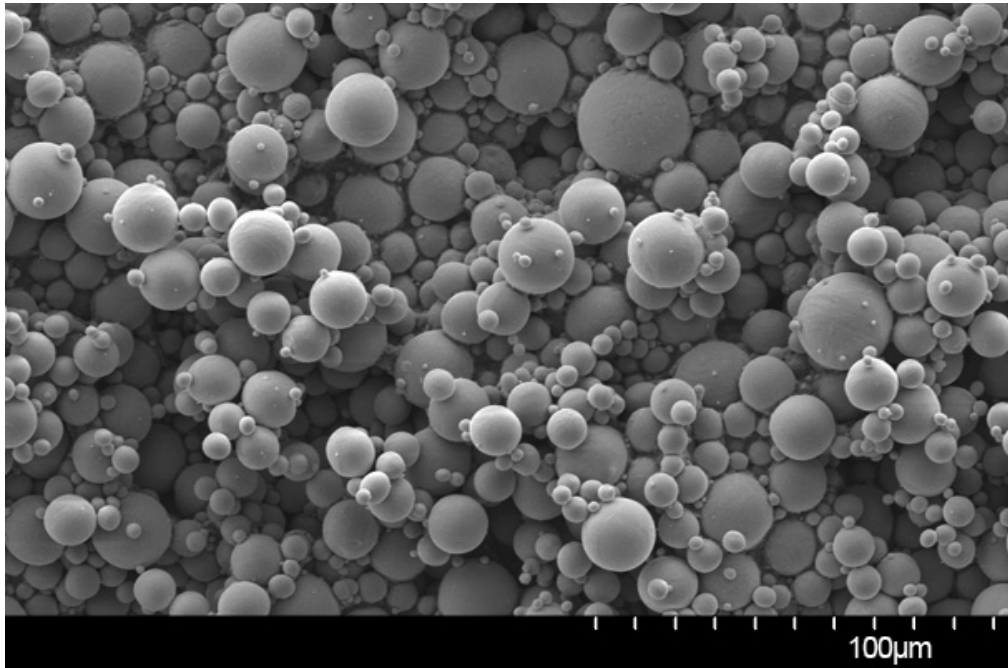
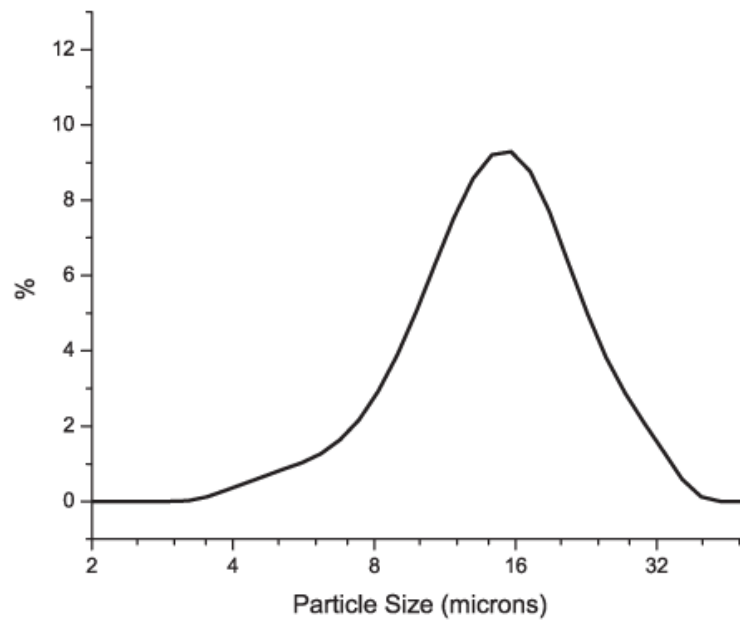


Cp-Ti (0-25 μm)

SEM



Particle Size Distribution



Size Distribution by Laser diffraction (ASTM B822-10)	
D10	8.0 μm
D50	14.3 μm
D90	24.1 μm

Chemical Composition

Element	AP&C typical Gr.1 (% wt.)	AP&C typical Gr.2 (% wt.)	Testing method
Carbon	0.02	0.02	ASTM E1941
Oxygen	0.10-0.18	0.18-0.25	ASTM E1409
Nitrogen	0.02	0.02	ASTM E1409
Hydrogen	0.0100	0.0100	ASTM E1447
Iron	0.05-0.30	0.05-0.30	ASTM E2371
Other max. each	0.1	0.1	ASTM E2371
Other max. total	0.4	0.4	ASTM E2371
Titanium	Balance	Balance	ASTM E2371

AP&C powders chemistry may comply with standards: ASTM B348, ASTM F67, ASTM F1580 and ASTM B863.

Density

Test	Density	Testing method
Tap density	2.81 g/cm ³	ASTM B527-06