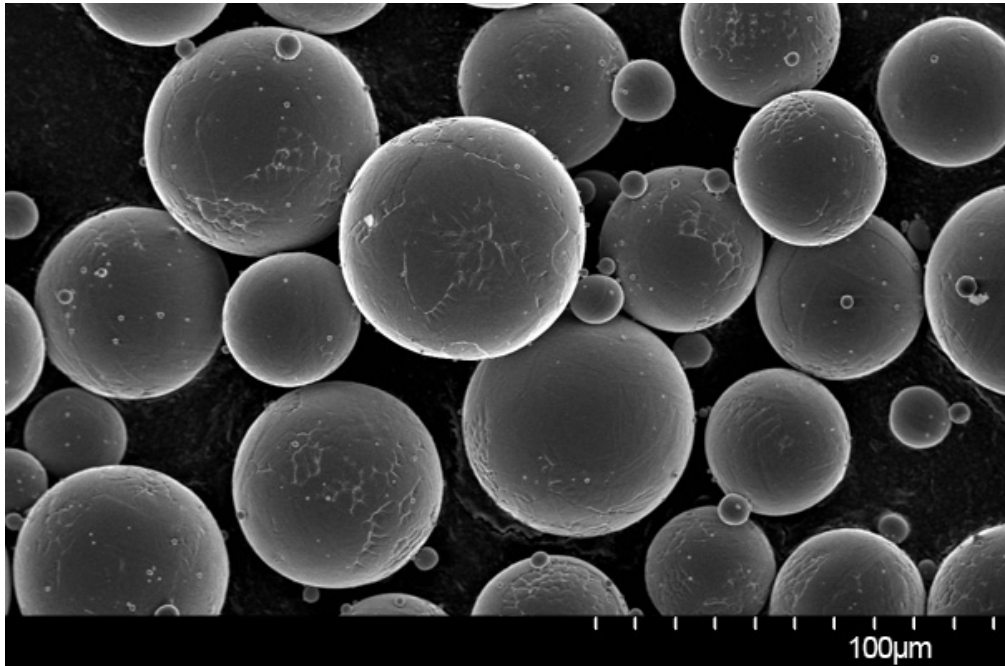


Cp-Ti (45-106 μm)

SEM



Particle Size Distribution

Microns	Size Distribution by Sieve Analysis (ASTM B214-07)
106-250	4.4%
75-106	55.2%
0-45	4.2%

Flowability

Test	Time	Testing method
Hall Flowmeter	– 23 s	ASTM B213-11
Carney Flowmeter	–4.2 s	ASTM B964-09

Chemical Composition

Element	AP&C typical Gr.1 (% wt.)	Testing method
Carbon	0.02	ASTM E1941
Oxygen	0.07-0.14	ASTM E1409
Nitrogen	0.02	ASTM E1409
Hydrogen	0.010	ASTM E1447

Iron	0.05-0.20	ASTM E2371
Other max. each	0.1	ASTM E2371
Other max. total	0.4	ASTM E2371
Titanium	Balance	ASTM E2371

AP&C powders chemistry may comply with standards: ASTM B348, ASTM F67, ASTM F1580 and ASTM B863.

Densities

Test	Density	Testing method
Apparent density	2.55 g/cm ³	ASTM B212-12
Tap density	2.86 g/cm ³	ASTM B527-06

Advanced Powders and Coatings Inc. © 2014