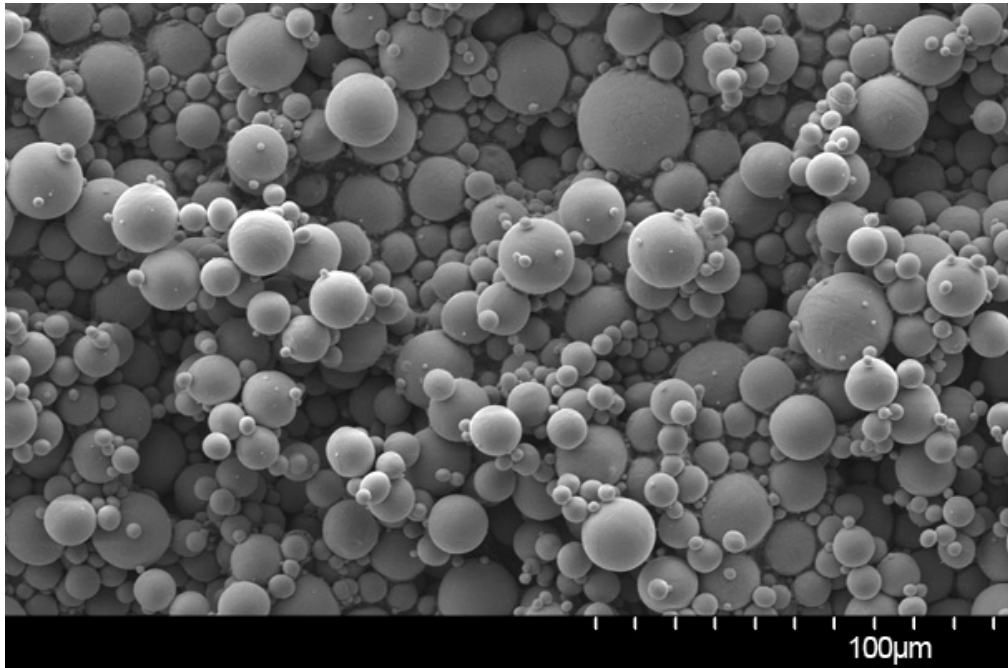
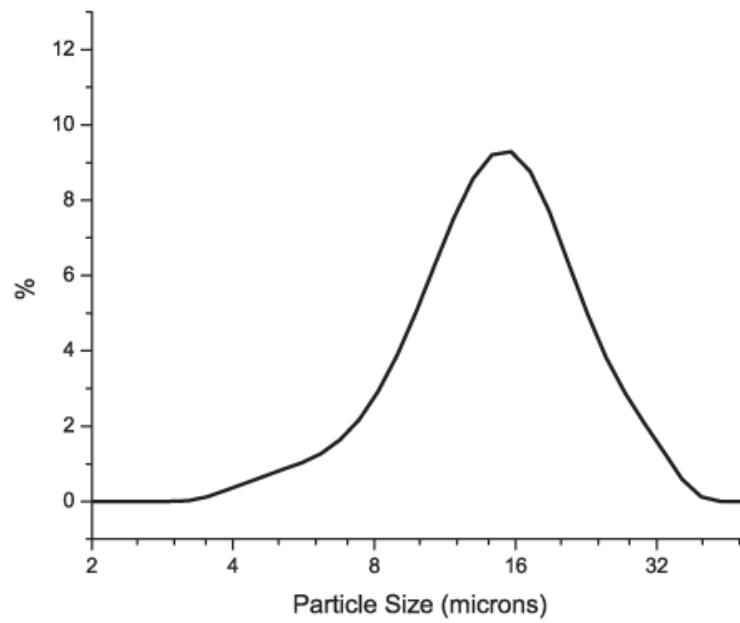


Ti-6Al-4V (0-25 μm)

SEM



Particle Size Distribution



Size Distribution by Laser diffraction (ASTM B822-10)	
D10	7.8 μm
D50	14 μm
D90	23.2 μm

Chemical Composition

Element	AP&C typical Gr.5 (% wt.)	Testing method
Carbon	0.02	ASTM E1941
Oxygen	0.14-0.17	ASTM E1409
Nitrogen	0.02	ASTM E1409
Hydrogen	0.0130	ASTM E1447
Iron	0.05-0.25	ASTM E2371
Aluminum	5.50-6.75	ASTM E2371
Vanadium	3.50-4.50	ASTM E2371
Copper	< 0.10	ASTM E2371
Tin	< 0.10	ASTM E2371
Yttrium	< 0.005	ASTM E2371
Other max. each	0.1	ASTM E2371
Other max. total	0.4	ASTM E2371
Titanium	Balance	ASTM E2371

AP&C powders chemistry may comply with standards: ASTM B348, ASTM F136, ASTM F1580, ASTM B863, AMS 4956, AMS 4998 and AMS 4928.

Density

Test	Density	Testing method
Tap density	2.83 g/cm ³	ASTM B527-06