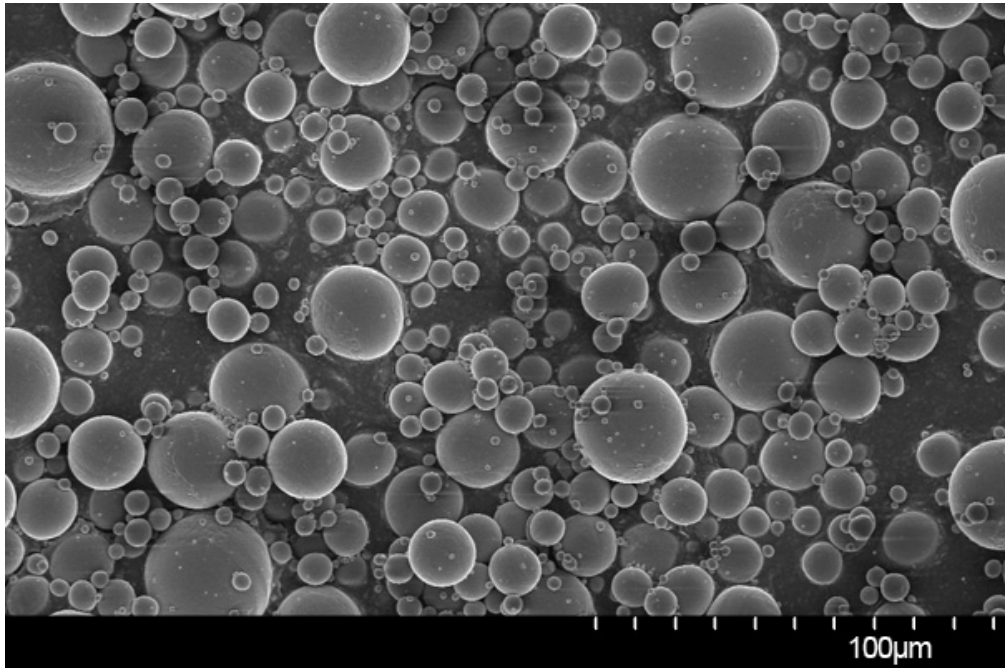
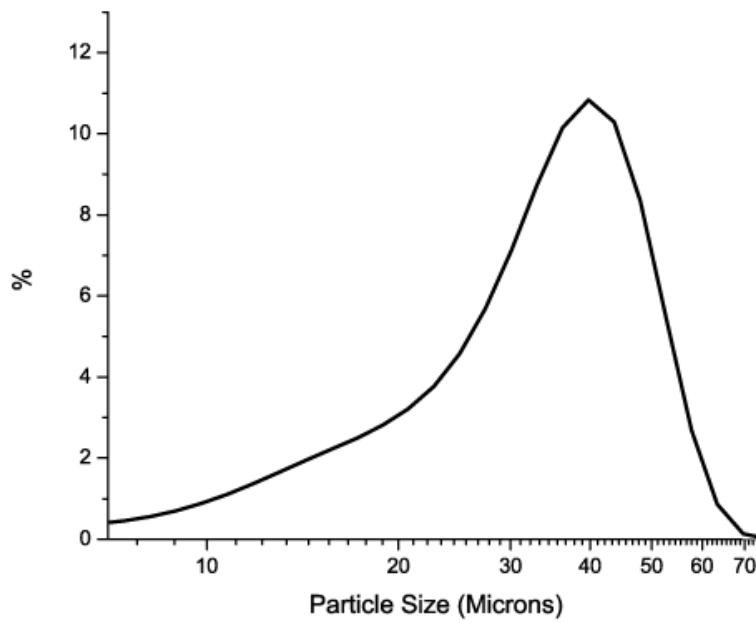


Ti-6Al-4V (0-45 μm)

SEM



Particle Size Distribution



Size Distribution by Laser diffraction (ASTM B822-10)	
D10	12.6 μm
D50	31.0 μm
D90	44.2 μm

## Flowability

Test	Time	Testing method
Hall Flowmeter	< 120 s	ASTM B213-11
Carney Flowmeter	< 25 s	ASTM B964-09

## Chemical Composition

Element	AP&C typical Gr.5 (% wt.)	AP&C typical Gr.23 (% wt.)	Testing method
Carbon	0.02	0.02	ASTM E1941
Oxygen	0.14-0.17	0.10-0.13	ASTM E1409
Nitrogen	0.02	0.02	ASTM E1409
Hydrogen	0.0125	0.0100	ASTM E1447
Iron	0.05-0.25	0.05-0.20	ASTM E2371
Aluminum	5.50-6.75	5.50-6.50	ASTM E2371
Vanadium	3.50-4.50	3.50-4.50	ASTM E2371
Copper	< 0.10	< 0.10	ASTM E2371
Tin	< 0.10	< 0.10	ASTM E2371
Yttrium	< 0.005	< 0.005	ASTM E2371
Other max. each	0.1	0.1	ASTM E2371
Other max. total	0.4	0.4	ASTM E2371
Titanium	Balance	Balance	ASTM E2371

AP&C powders chemistry may comply with standards: ASTM B348, ASTM F136, ASTM F1580, ASTM B863, AMS 4956, AMS 4998 and AMS 4928.

## Densities

Test	Density	Testing method
Apparent density	2.52 g/cm <sup>3</sup>	ASTM B212-12
Tap density	2.81 g/cm <sup>3</sup>	ASTM B527-06